

CVe OnDemand™






User's Manual

Version 1.5.5 (December 2011)



OnDemand is a reporting software which is provided free of charge by AST Technology. When connected to a CVE Monitor, OnDemand generates a historical service record for your mould.

System and Software Requirements

Required

-  Windows XP (SP2 or greater) or Windows 7 Professional
-  .Net Framework 4 Client Profile*
-  Microsoft Excel® 2003 or greater
-  Internet Explorer 8
-  Internet Access**

Recommended

-  Microsoft Excel® 2007 (SP2) or Excel® 2010 Professional
-  Internet Access***

*If you have an internet connection and you do not have .Net Framework 4 Client Profile, it will automatically download and install during OnDemand's installation. If you are not connected to the internet and .Net Framework 4 Client Profile is not installed on your computer, it can be downloaded and manually installed by visiting <http://www.microsoft.com/download/en/details.aspx?id=24872>

**OnDemand software must have access to the internet when being used with CVE Monitors that have a Device ID beginning with the letter O. The Device ID is printed on the front face of the CVE Monitor.

***CVE Monitors that have a Device ID beginning with the letter M require internet access to take advantage of all of OnDemand's benefits.

Installing OnDemand Software

Four steps must be followed for OnDemand to work correctly with your computer. Each step is outlined in further detail in this section.

Step 1: Installing OnDemand to your computer

Step 2*: Adjust Excel® settings to allow OnDemand to use it to generate reports

Step 3*: **[Windows 7 only]** Adjust settings to allow OnDemand to work with your operating system

Step 4*: Register OnDemand and receive a password

**Steps 2-4 are only required when installing OnDemand for the first time and do not need to be performed when upgrading OnDemand to a newer version (see the section titled Upgrading OnDemand Software for additional information).*

After completing these steps OnDemand can be run by selecting any of the shortcuts that were installed with OnDemand.

- Start Menu (Cve=folder name)
- Cve OnDemand™ icon on desktop
- Quick Launch menu

Upgrading OnDemand Software

We are committed to the continual development of our Cve Monitoring/ OnDemand program. As software updates become available all registered users will be notified via email. The latest version of OnDemand is always available at <http://CveMonitor.com>. The latest product information and technical documentation is also located here.

To install an upgraded version of OnDemand simply follow the directions contained in “**Step 1:** Installing OnDemand to your computer”.

Installation of an OnDemand upgrade does not impact previously stored reports or files. This information will remain unaltered at its original storage location. After upgrading, OnDemand continues to store reports in the same folders. Additionally, upgrading software does not require reentry of a User Name or password.

Step 1: Installing OnDemand to your computer

OnDemand software can be downloaded from <http://CVeMonitor.com>

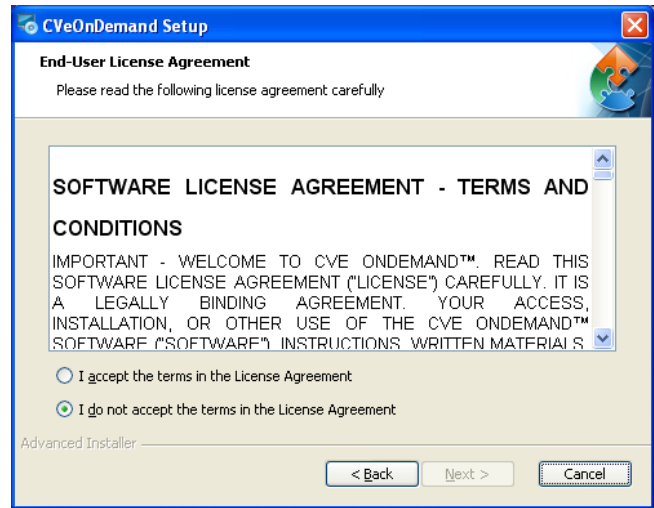
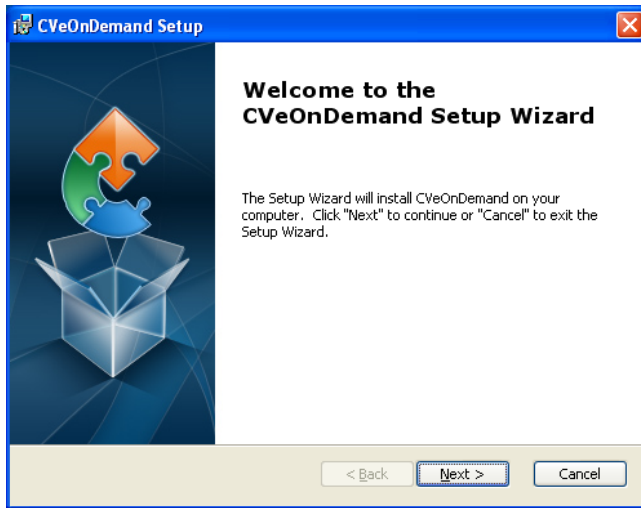
Clicking "OnDemand Software" starts the installation procedure

The screenshot shows the CVe Monitor web application in a browser window. The interface includes a navigation menu with 'ABOUT CVe MONITOR', 'CVe ONDEMAND', 'CVe DATABASE', and 'CVe NEWS'. The main content area features several data visualization charts: 'Solid Performance Summary' with a bar chart, 'Production Summary' with a line graph, 'Cycle Times' with a bar chart, and 'Efficiency' with a bar chart. On the right side, there is a detailed view of a CVe Device (ID: M022139) with fields for Mold ID, Part Name, Program Name, Customer, Target Activity (%), and Target Cycle Time. A physical CVe Monitor device is shown in the foreground, displaying 'HELLO' on its screen. The footer of the page contains the text: 'The CVe Monitor is an electronic mold monitoring system that records more than just mold cycles completed. Developed by AST Technology GmbH, the CVe Monitor system provides cycle time monitoring, maintenance activity tracking, and comprehensive reporting available to Tooling Engineers wherever the mold is run.'

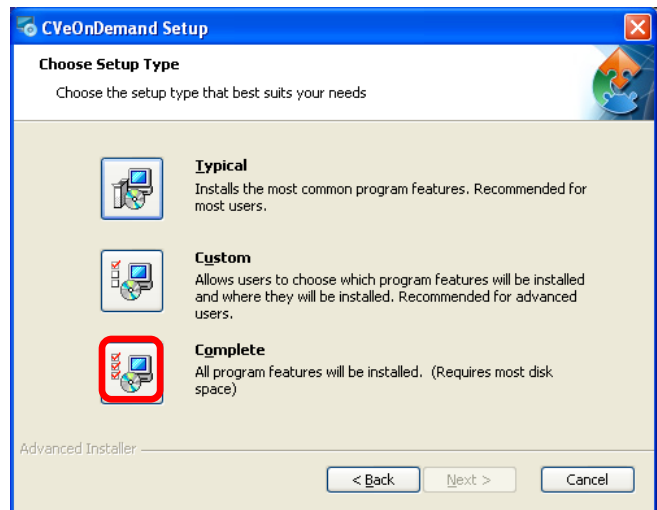
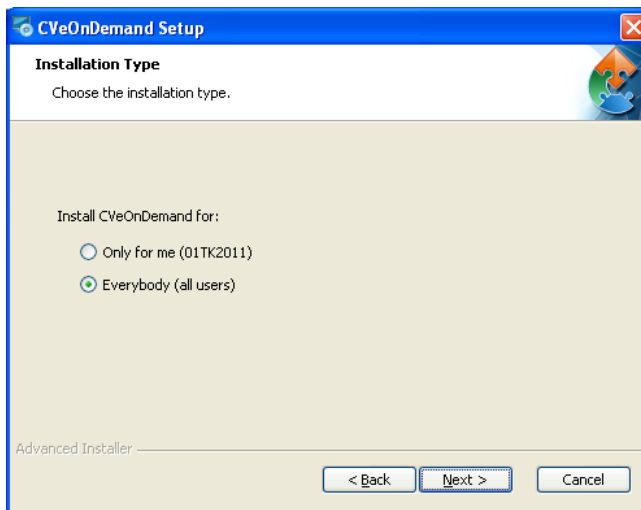
Choose "Run" to continue the installation

The screenshot shows a Windows 'File Download - Security Warning' dialog box. The title bar reads 'File Download - Security Warning'. The main text asks: 'Do you want to run or save this file?'. Below this, a small icon of a file is shown next to the following information: Name: OnDemand-Setup.exe, Type: Application, 4.62MB, From: www.ast-tech.de. At the bottom of the dialog, there are three buttons: 'Run', 'Save', and 'Cancel'. A warning icon (a shield with an exclamation mark) is located at the bottom left, and a warning message reads: 'While files from the Internet can be useful, this file type can potentially harm your computer. If you do not trust the source, do not run or save this software. [What's the risk?](#)'

*Follow the prompts on the screen by clicking “Next”.
When prompted, accept the Terms and Conditions then select the “Next”.*



Choose Installation Type (selecting “Everybody” is the recommended setting) and select “Next”. Finally click on “Complete” install and click “Next” to finish the installation.



Step 2: Change Excel® settings to allow OnDemand to use it to generate reports

OnDemand software uses Microsoft Excel® to generate Reports and Activity Logs. Following the instructions below for the version of Excel® that is installed on your computer allows complete reporting capabilities.

EXCEL 2010

- *Open Excel 2010*
- *Select **File** from the taskbar then select **Options** on the left hand side*
- *Select **Trust Center** from the left side then click on the **Trust Center Settings** box*
- *Choose **Macro Settings** from the left and check the box **Trust access to VBA project***
- *Click **OK** and exit Excel*

EXCEL 2007

- *Open Excel 2007*
- *Click on the **Microsoft Office button** located in the upper left hand corner*
- *Select **Excel Options***
- *Click on the **Trust Center** tab then click on the **Trust Center Settings...***
- *Choose **Macro Settings** then check the box to **Trust access to the VBA project object model***
- *Click **OK** and exit Excel*

EXCEL 2003

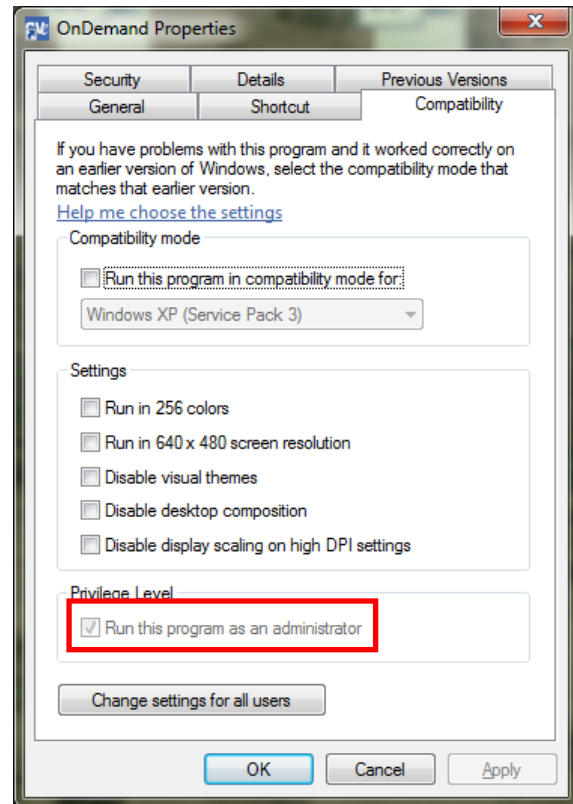
- *Open Excel 2003*
- *From the drop down menu click on **Tools**, then **Macro**, then select **Security...***
- *Select the **Trusted Publishers** tab then check the box labeled **Trust access to Visual Basic Project***
- *Click **OK** to apply the settings and exit from Excel*

Step 3: Change settings to allow OnDemand to work with Windows 7 operating systems

Windows 7 requires a final step to complete the installation process. The following instructions grant OnDemand permission to run Excel® and generate reports.

Windows 7 Only

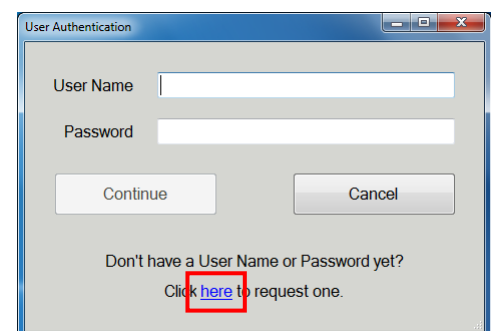
- Right click the OnDemand desktop icon
- Choose **Properties** from the menu (bottom of list)
- Check the box next to **Run this program as an administrator**
- You may be prompted to enter an administrative password. (If prompted, consult your MIS or IT department for assistance.)
- Click Apply, and then close the window



Step 4: Register OnDemand software

When OnDemand is run on a computer for the first time, the user will be prompted to enter a User Name and Password. Clicking the word “here” at the bottom of the User Authentication Screen will provide details for obtaining a User Name and Password.

Once the name/password has been received by AST via email, launch OnDemand and enter the User Name and Password that has been provided. The User Name / Password combination provided to your company will be used for all OnDemand installations within the location.



After entering a User Name and Password for the first time, subsequent launching of the software will not require this information.

Using OnDemand to Generate a Report

Choosing Data Storage Location Preferences

The first time that OnDemand is run you will be taken to the Settings tab. Here, you will choose a directory in which to save your OnDemand Reports.

Initially, OnDemand will default to a storage location on a local drive. If you choose to accept the this default click the **Continue** button. If you decide to select a different location, click on the **Browse** button, select the new destination location, then click the **Continue** button.

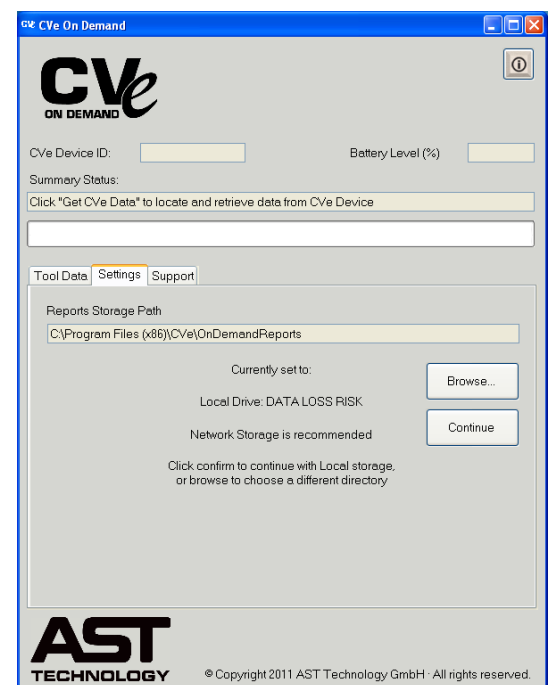
OnDemand supports both local and network file storage:

- Local Storage would be a single computer that saves information to a drive contained on the same computer (typically C:/)
- Network Storage pertains to situations where several computers are linked together and are able to share files/information from a shared folder or directory.

In most situations Network Storage is preferred over Local Storage. The advantages include:

- Ability to run a mould query from any computer running OnDemand
- Central repository of all mould reports makes report reviewing easy.
- Network storage drives are backed up more frequently, decreasing data loss risk.

To set a network path, ensure there is write access in the directory (new or existing). Consult your IT department if further assistance is required.



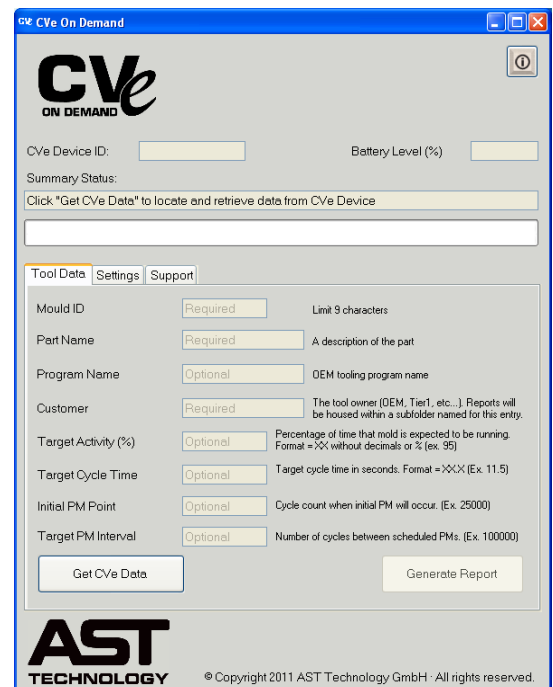
Initializing a CVe Monitor using OnDemand

The first time that a new CVe Monitor is connected to OnDemand software the user will be required to enter several pieces of information about the mould. This information will be permanently recorded on the CVe Monitor and printed on all reports that are generated for this tool. *Please note that data written to the CVe Monitor can only be altered by AST Technology.*

Several other pieces of information about the tool are **optional** and can be written to the CVe Monitor at any time. Once written to the CVe they cannot be edited and are permanently recorded to the CVe Monitor.

Steps to Initialize a CVe Monitor

- 1) Follow the (4) steps necessary to install OnDemand and run on your PC
- 2) Start OnDemand by clicking on the shortcut that has been installed to your desktop
- 3) Connect the CVe Monitor to your PC using a USB to a Mini Type B cable
- 4) Allow several seconds for your PC to automatically load the CVe drivers
- 5) Press the button on the face of the CVe Monitor until **FLASHdr** is not shown in the display
- 6) Click the “Get CVe Data” button
- 7) Fill in the fields for all required information (Optional fields can be left blank at this time)
 - Mould ID
 - Part Name
 - Customer Name
 - Advanced Cycle Count [**Optional**]: If replacing mechanical CV/CVR with a CVe, enter the cycle count from mechanical counter that is being replaced by the CVe Monitor. This is the only opportunity to enter an advanced cycle count and you will not be given an opportunity to change it in the future.
- 8) Click on “Generate Report” and accept the changes that have been made.
- 9) Optional fields can be completed at anytime and include:
 - Program Name: Tooling program assigned by tool owner
 - Target Activity (%) : Percentage of active time to idle time.
 - Target Cycle Time : Target time to complete a moulding cycle
 - Initial PM Point: Maximum cycles the tool can be run prior to receiving its first maintenance check
 - Target PM Interval: Maximum amount of cycles allowed between Preventive Maintenance (PM)



At this time the tool information that was entered has been permanently recorded to the CVe Monitor. Optional fields can be populated at any time by following the same steps as outlined above.

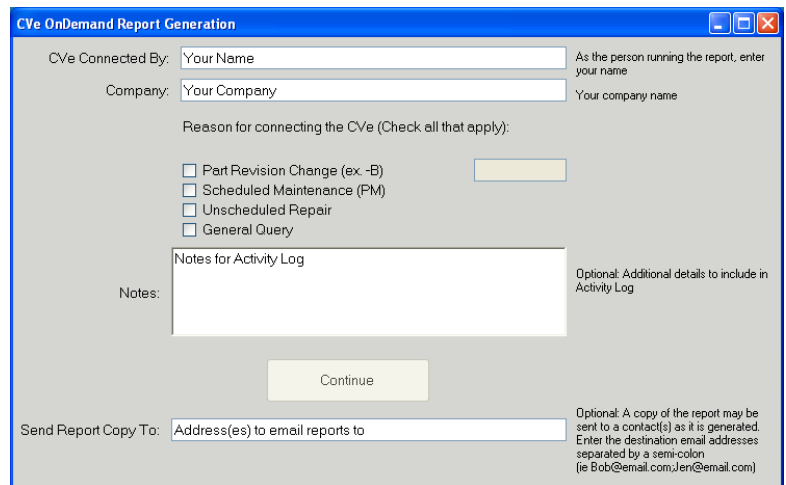
Activity Reports

OnDemand creates a customized Activity Report for each mould with a CVE. These reports provide information on current and historical cycle times and efficiency measures. Maintenance activities are graphed with cycle counts to ensure consistent and on-time PM.

Activity Reports are powerful indicators of the condition of the mould and lend valuable insight into moulding quality issues. As such, many key stakeholders require that reports are to be sent at regular intervals.

Report Generation Window

A Mould Performance Summary Report (MPSR) is generated by completing the required fields on the Report Generation Window. This information provides valuable data to help track the effectiveness of preventive maintenance programs while the notes field provides a virtual notebook later shown in the Activity Log.



Generating a Performance Report and Activity Log

- 1) Connect an **initialized** CVE Monitor to your PC using a mini Type B to USB cable.
- 2) Open your **registered** copy of OnDemand software
- 3) Click on "Get CVE Data"
- 4) After OnDemand retrieves mould data from the CVE Monitor click "Generate Report" to continue

The following actions apply to the CVE OnDemand Report Generation Panel that just appeared

- 5) Complete "CVE Connected By" and "Company" fields (CVE OnDemand Report Generation panel)
- 6) Check the "Reason for Connecting CVE" and add notes to be added to the Activity Log
- 7) Add email destinations for the report, separating each with a semi-colon(;) and click "Continue"

The ability to send emails from OnDemand requires an Internet connection and may require additional firewall settings. Your company must also allow OnDemand to have access to the Internet to be notified of upgrades by verification of the version as the software runs. If users cannot allow access for this, emails need to be sent via Outlook or other email systems by attaching the reports generated that are saved to the folder(s) designated.

Report Formats

Recognizing the differences in software in use by our customers, OnDemand is configured to operate across multiple platforms and Windows/IT environments. Full reporting functionality can be gained by using Excel® 2003 or greater. File formats are impacted by the version of Excel® installed on the PC being used to query the CVE Monitor.

Reporting Formats Supported

Microsoft Excel® Version	Creates PDF Document*	Creates Excel® Workbook
Excel® 2010	✓	✓
Excel® 2007	✓	✓
Excel® 2003		✓

AST Technology recommends Excel® 2007 or greater. The ability to generate an uneditable PDF creates an added measure of report security. Please note that the Excel® report is also password protected, but the PDF is the more portable format, not dependent upon the recipient's version of Excel®.

Flash Storage Mode

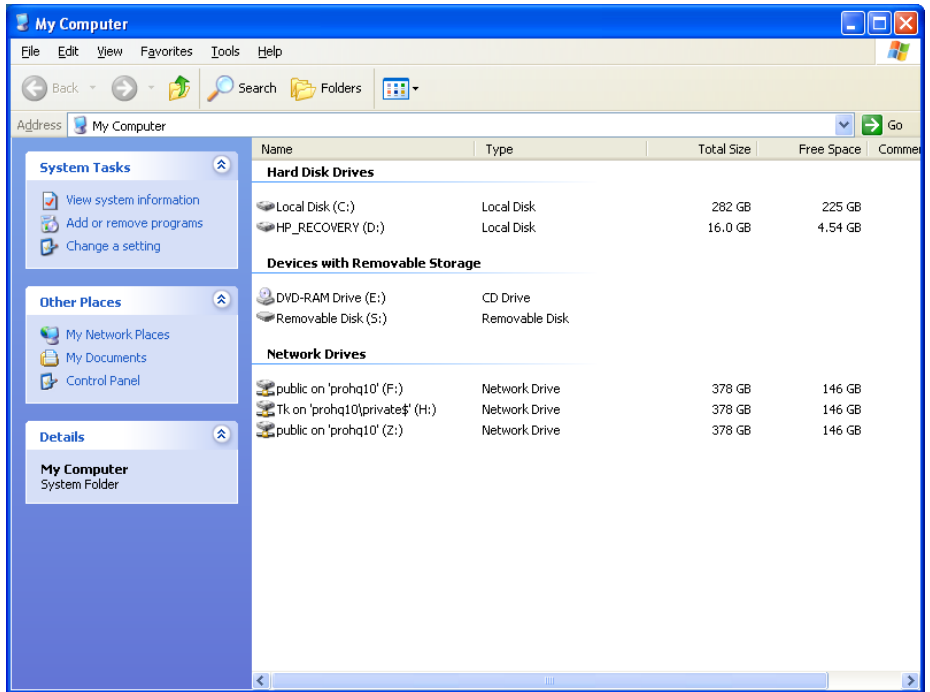
All CVE Monitors version 1.5 and greater come with approximately 2GB of file storage space. The Flash drive uses preinstalled drivers and does not require additional software.

To access the flash drive, tether the CVE to your PC using a Type B miniUSB to USB cable then press the button on the face of the CVE until **FLASHdr** is displayed on the CVE Monitor.

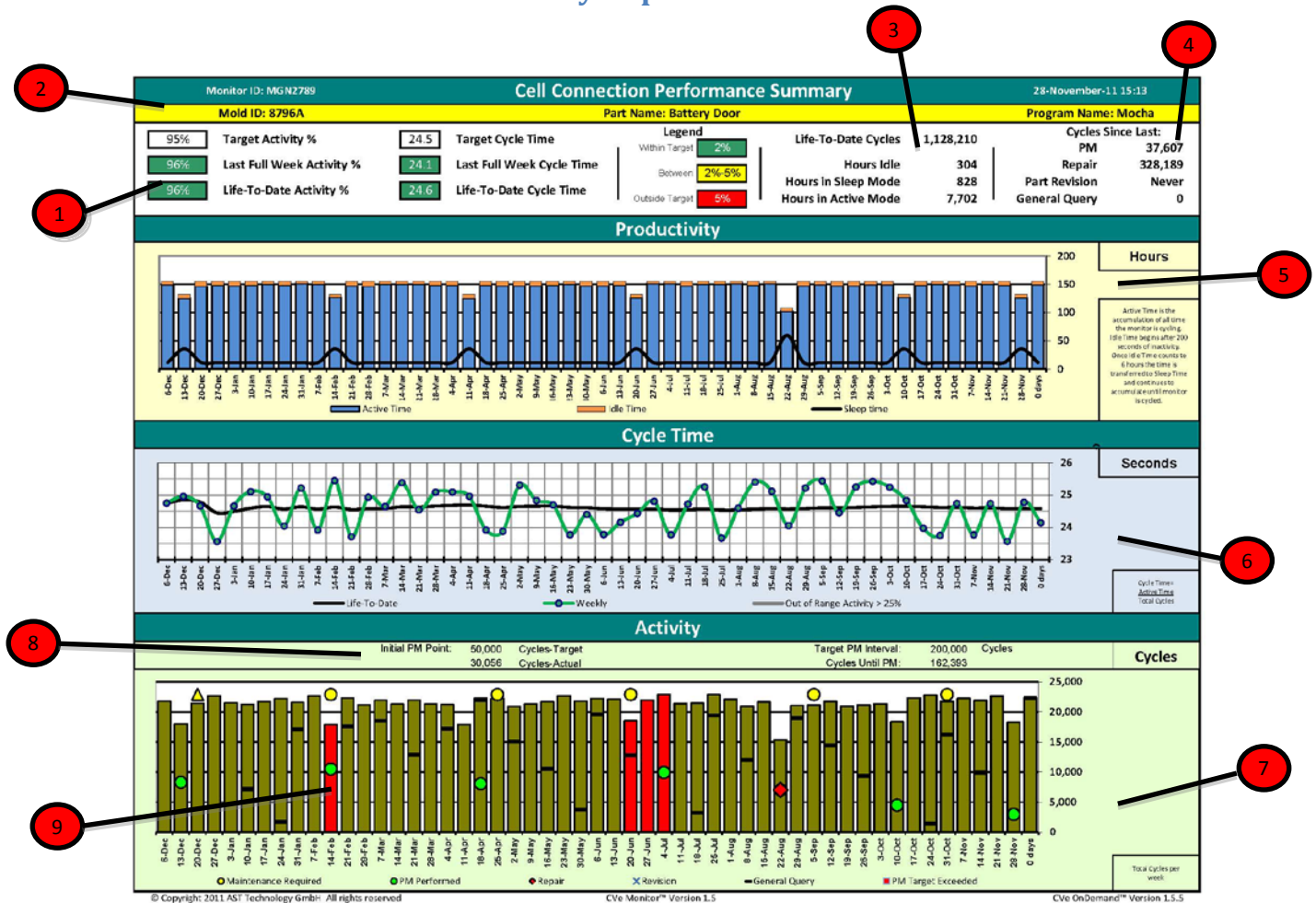
Windows will automatically assign a drive letter to the CVE Monitor. To determine what drive has been assigned to the CVE click on Windows Explorer and find the device titled **“Removable Disk”** and the drive listed along side it is the assigned drive.

This feature has been added to allow portability of documents relating to the mould. For example, the CVE Flash drive allows updated mould geometry (blueprints) to “travel” with the tool. This allows mould shops to have the information necessary to complete repairs and revisions without having to track down prints.

NOTE: To run OnDemand reports, the CVE Monitor must be toggled out of “FLASHdr” mode.



OnDemand Performance Summary Report



Activity Monitors indicate changes in idle times, alerting personal of downtime issues

1. **Cycle Time Monitors** quickly call attention to increases and decreases in Cycle Times and Activity versus defined targets entered during CVE Monitor initialization
2. **Mould Data Panel** allows all stakeholders to quickly identify the mould being viewed
3. **Service History** displays hours that your mould has been run and Lifetime Cycle Counts
4. **Tool Activity Panel** displays the cycle count of the most recent PM (preventive maintenance), repair, part revision and general query
5. **Productivity Graph** shows the amount of downtime for your mould
6. **Cycle Time Graph** alerts individuals to changes in cycle time by comparing weekly and historical data, weekly average cycle times that are further than 25% from historical values are shown as a gray bar (indicating out-of-range activity)
7. **Activity Graph** presents historical weekly cycle counts to allow accurate press time assessments
8. **Maintenance Alert** displays when initial PM occurred and cycles until next PM is required
9. **Activity Tracking** graphically displays when the tool received PM, Repairs, Part Revisions and Queries. Sessions in which a tool is operated beyond required maintenance levels are indicated with a change in the color of the bar. For example a red indicates operation outside of the required PM limit.

OnDemand Activity Log

OnDemand Activity Log [Software version 1.5.5]											
Cve Initialize Date	24-Oct-10	11-Nov-10									
Device ID	MGN2789	MGN2789									
Mould #	8796A	8796A									
Part Name	Battery Door	Battery Door									
Program Name	Mocha	Mocha									
Customer	Cell Connection	Cell Connection									
Target Activity %	N/A	95%									
Target Cycle Time	N/A	24.5									
Initial P.M. Point	50,000	50,000									
Target P.M. Interval	200,000	200,000									
Cycles Prior to Cve Installation	0	0									

Date/Time	BAT	Cycles	OD User	Conn. By	Company	Dest.	Cve Connection Reason					Notes
							REV	MNT	REP	GEN	REVV	
08-Nov-11 21:05	95	1,128,210	MOLDMAS1	Carol Sperow	Cellular Conn.	Compliance@CC.com	N	N	N	Y	N/A	Cleaning and Inspection Completed
27-Oct-11 6:51	95	1,090,603	FASTTOOL	Theo Hoyer	Cellular Conn.	Compliance@CC.com	N	Y	N	N	N/A	
15-Oct-11 20:57	95	1,052,996	MOLDMAS1	Carol Sperow	Cellular Conn.	Compliance@CC.com	N	N	N	Y	N/A	
02-Oct-11 21:17	95	1,015,389	MOLDMAS1	Carol Sperow	Cellular Conn.	Compliance@CC.com	N	N	N	Y	N/A	Cleaning and Inspection Completed
21-Sep-11 20:55	95	977,782	MOLDMAS1	Carol Sperow	Cellular Conn.	Compliance@CC.com	N	N	N	Y	N/A	
08-Sep-11 6:50	95	940,175	FASTTOOL	Theo Hoyer	Cellular Conn.	Compliance@CC.com	N	Y	N	N	N/A	
27-Aug-11 21:05	96	902,568	MOLDMAS1	Carol Sperow	Cellular Conn.	Compliance@CC.com	N	N	N	Y	N/A	Cleaning, inspection and repair completed: cracked material saver replaced. Pics and work order on flashdr.
14-Aug-11 20:57	96	864,961	MOLDMAS1	Carol Sperow	Cellular Conn.	Compliance@CC.com	N	N	N	Y	N/A	
01-Aug-11 20:45	96	827,354	MOLDMAS1	Carol Sperow	Cellular Conn.	Compliance@CC.com	N	N	N	Y	N/A	
23-Jul-11 7:12	96	800,021	FASTTOOL	Theo Hoyer	Cellular Conn.	Compliance@CC.com	N	Y	Y	N	N/A	
23-Jul-11 21:00	96	762,414	MOLDMAS1	Carol Sperow	Cellular Conn.	Compliance@CC.com	N	N	N	Y	N/A	
09-Jul-11 21:01	96	724,807	MOLDMAS1	Carol Sperow	Cellular Conn.	Compliance@CC.com	N	N	N	Y	N/A	
27-Jun-11 21:10	96	687,200	MOLDMAS1	Renee Sanchez	Cellular Conn.	Compliance@CC.com	N	N	N	Y	N/A	

- Mould Identification Data** provides important information such as
 - Date Mould was entered into service
 - Unique Serial Number for the Cve Monitor linked to this log
 - Name of part being moulded
 - Unique Program Name to allow OEMs to link together data from program tools
 - Customer's name
 - Target Activity Percentage for integration into Activity Reports
 - Target Cycle Time to indicate failure to maintain recommended cycle times
 - Initial PM Point is a user defined cycle count that the first tool maintenance must be completed by
 - Target PM Point is the required maintenance interval following Initial PM
- Mould Activity Dates** indicate dates for mould pulls and demonstrate adherence to OEM directed reporting
- Lifetime Cycle Count** provides historical usage requirements allowing more efficient planning of Preventive Maintenance (PM) Programs
- Destination Address** provides a log of customers that have been provided an Activity Report and Log, eliminating the need to go through additional steps to provide this information to your customer
- Maintenance Log** records downtime related to Preventive Maintenance and Mould Revisions
- Notes** allow customers the ability to keep a log of electronic records with each of their moulds. Warnings for overdue or upcoming PM that have been issued are noted in this section with notes entered by the user

For technical support on the software or any questions on the Cve Monitor, please contact helpdesk@ast-tech.de or your local distributor.